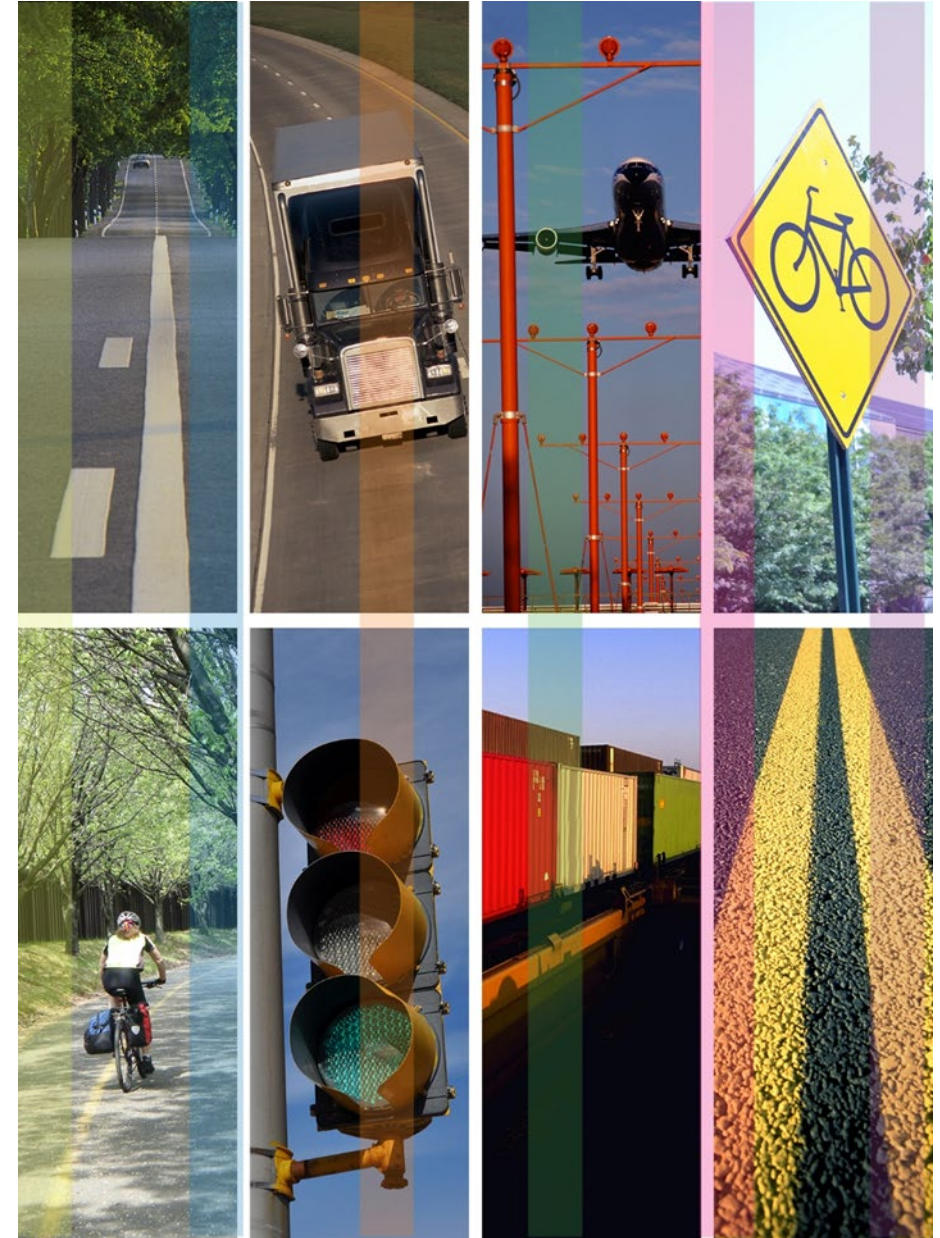




2050 Statewide Transportation Plan / 2020 Statewide Strategic Transportation Plan Update

State Transportation Board – SWTP/Strategic Planning Committee

May 15, 2019



Background & Overview

2040 SWTP/2015 SSTP Update

First time the SWTP and SSTP were merged together to show the traditional transportation analysis of the federally required LRTP and the strategic business case for capital investment required by State Senate Bill 200

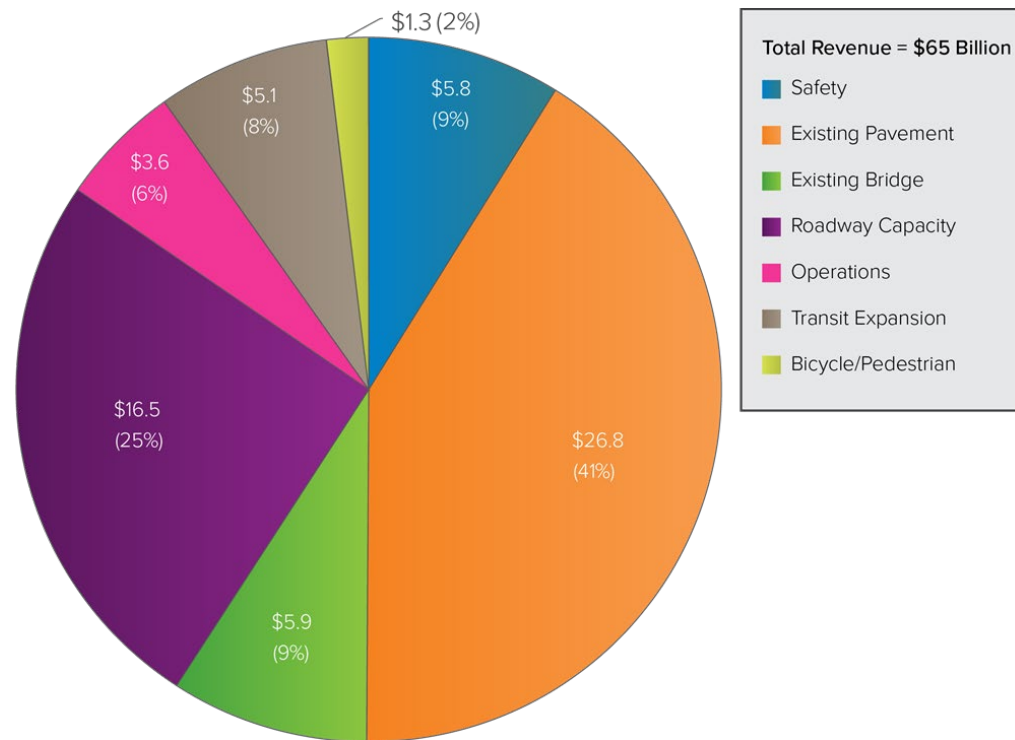
Statewide Transportation Plan (SWTP)

- Federally Mandated document
- Outlines the multimodal transportation issues and needs over a minimum of a 20 year planning horizon
- Usually updated every 4-5 years

Statewide Strategic Transportation Plan (SSTP)

- State law requires that a transportation investment plan be updated every 2 years
- The goal of the plan is to target and advance economic growth in Georgia
- The SSTP key strategies are monitored via annual performance-monitoring progress report

Key Deliverables



Recommended Investment Strategies, 2040 SWTP/SSTP, Jan 2016

- Updated travel demand, economic, and financial forecasts
- Investment needs that align across a number of required, performance-based strategic plans
 - SWTP/SSTP
 - Transportation Asset Management Plan
 - Transit Asset Management Plan
 - Strategic Highway Safety Plan
- Recommended programmatic investment levels that could impact a number of GDOT Offices
- Unique opportunity to consistently message investment priorities of the state

} STIP

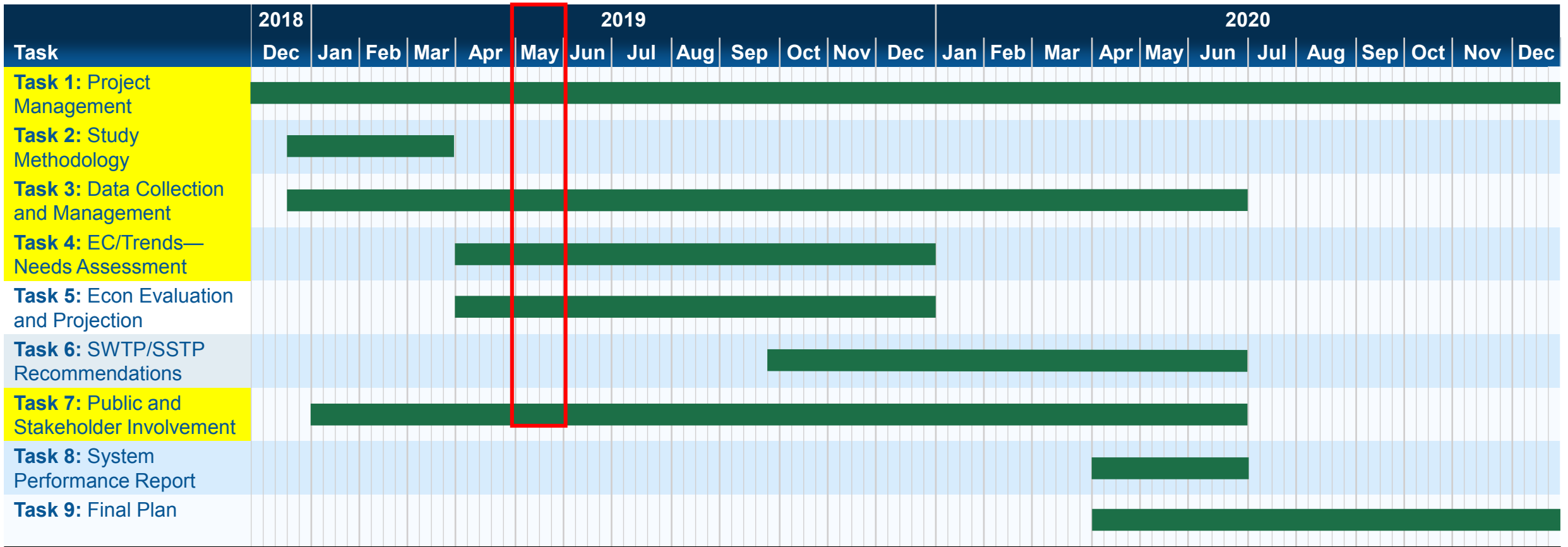
Plan Enhancements

- Integrated performance management, System Performance Report
- Alternative futures analysis
 - Technology, socio-demographic, or other disruptors to status-quo
 - Level of risk/opportunity for transportation revenues, core investment programs, performance objectives
- Resiliency analysis
 - Critical security assets
 - Potential impact of freight/highway network disruptions given man-made or natural events
 - Risk mitigation strategies
- Interoffice working group

Interoffice Working Group

- Kickoff meeting took place in February
- Status updates at key study milestones and two-way dialogue across GDOT Offices
 - Transportation Data
 - Traffic Operations and Safety
 - Intermodal
 - Communications
 - Performance-Based Management and Research
 - Bridge
 - Financial Management
 - Maintenance
- Support consistent analysis and messaging
- Support implementation strategies that make plan more actionable to other Offices

Task Summary and Schedule



 In Progress

Currently in Progress

- Task 1 – Executive Management and Interoffice Discussions (Intermodal, Bridge, Communications, Maintenance, and Traffic Ops/Safety) held
- Task 2 – Study Methodology Document is complete
- Task 3 – Travel Model Technical Memo is complete, Data collection & technical analysis has begun
- Task 4 – Existing Conditions/Trends & Needs Analysis in early stages of coordinating with other GDOT Offices
- Task 7 – Coordination Plan submitted and under review, presented at GAMPO meeting, Stakeholder Advisory Committee members being discussed, targeting events for outreach

Task 1: Project Management
Task 2: Study Methodology
Task 3: Data Collection and Management
Task 4: EC/Trends—Needs Assessment
Task 5: Econ Evaluation and Projection
Task 6: SWTP/SSTP Recommendations
Task 7: Public and Stakeholder Involvement
Task 8: System Performance Report
Task 9: Final Plan